

# CELLSONIC: LOW FREQUENCY U.S.

Low-frequency ultra-sounds are a sure and painless method that when combined with drainage enables the most rebellious fat particles to be treated.

## The technique :

Low-frequency ultra-sounds penetrate through the adipose tissue; their vibrating action weakens the fibres that surround the adipocyte cells and favours fat acids release.

These low-frequency ultra-sounds, oscillate between 28 and 32 KHz and are applied under stationary conditions through a contact gel and have 3 effects:

**Mechanical effects :** "micro-massage": alternative compression and expansion of the tissues (pressure differences), provoke cells friction and defibrosing.

**Thermal effects :** the energy released by the ultra-sounds becomes heat and favours a vasodilatation.

**Biological effects :** they are due to both mechanical and thermal effects: It activates the local venous and lymphatic circulation and relaxes the muscles.

Once released, fat acids must be drained in order to favour the evacuation. This is why pressure therapy represents an excellent complementary technique.

Furthermore, an intensive physical activity will use these fat acids through aerobic metabolic means and naturally drain them with muscular efforts.

**SONOPHORESIS :** The vibrating effect of the ultrasounds facilitates the penetration of active substances through the skin.

This is the major interest in the use of low-frequency ultra-sounds: they optimize the results of cosmologic products such as Effibromine slimming gel.



THE METHOD

BODY ASSESSMENT

NUTRITIONAL ASSESSMENT

TREATMENT  
OF FIBROSE TISSUES

VASCULARISATION  
DEFIBROSING  
DRAINAGE

LYMPHATIC DRAINAGE

ELECTROSTIMULATION



**The device:** CELLSONIC has 4 entirely independent generators which supply up to 3 cells of 3 transducers; this enables you to treat different parts of the body at the same time and with different programmes perfectly adapted to the concerned part.

Frequency of 30 KHz oscillating between 28 and 32 KHz.

Maximal output voltage: 15 V controlled peak.

Maximum output power: 0,2 A peak.

Mains power voltage: 220/240 V – 50/60 HZ

Delivered with 12 cells (10 triple and 2 simple).

Available maximal power by cell: 2W/cm<sup>2</sup>.

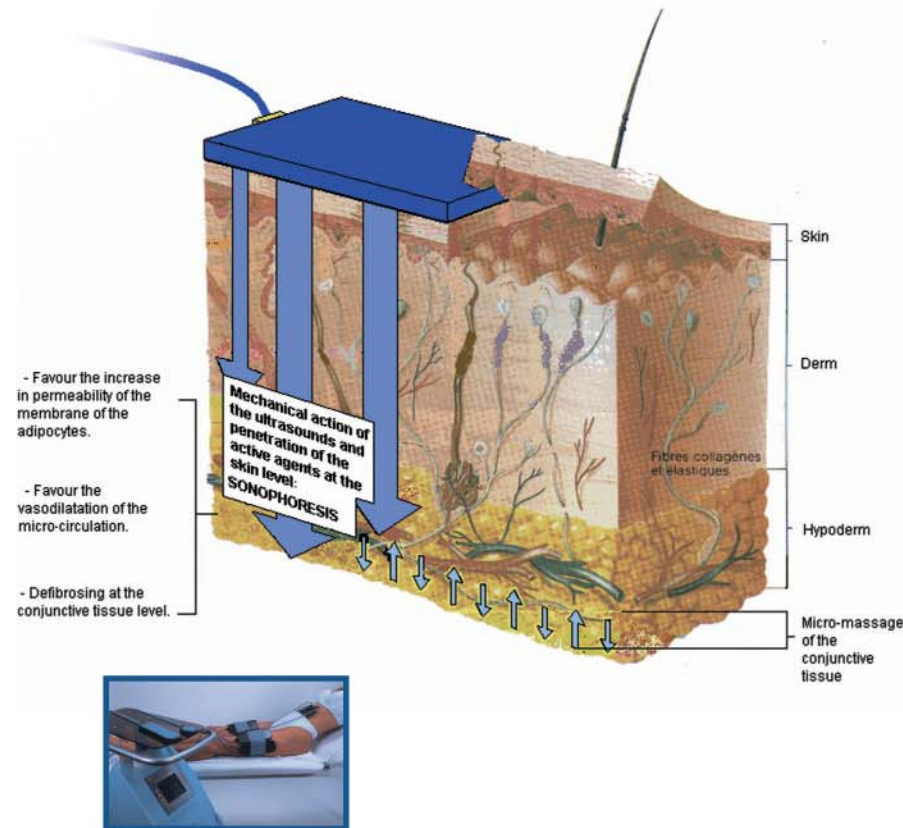
Working programmes: • Continuous mode: 10 seconds of work/1 second of rest. • Pulsated mode: 7 seconds of work / 2 seconds of rest, 5/2, 3/3 and 2/1.

Contra-indications: skin injuries (eczema...) – phlebitis - light and major venous thrombosis - ischaemia and arthritis of the lower limbs – osteoporoses – pace maker – pregnancy bone artificial limb – plaques and screws.

**Consumables related to the technique :** ULTRA- SOUNDS GEL.

Ultra-sounds deep action is widely intensified by a special gel applied before a treatment on the whole surface of the ultra-sounds plaque.

It is a neutral gel, available in 5 litres bottle.



## EFFIBROMINE SLIMMING GEL

Ultra-sounds have an important property: they make products penetrate more deeply through the skin.

Effibromine, a remarkable slimming product made from 13 active products, penetrates more deeply and is therefore more efficient when used in conjunction with this technique.

Can be used in professional centres but also at home; morning and evening applications are additional treatments. 200 ml or 500 ml bottles.

